

FINAL



| | | | | | | |
|-----------|---------|-----------|---------|-----------|--------------|--|
| ΑΣ Λοκρός | | 85 | - | 71 | Άρης Νικαίας | |
| 64% | 9 / 14 | FT | 13 / 19 | 68% | | |
| 58% | 29 / 50 | 2p | 17 / 36 | 47% | | |
| 30% | 6 / 20 | 3p | 8 / 26 | 31% | | |
| 43 | 28 - 15 | Rb | 21 - 12 | 33 | | |
| | 15 | Tu | 16 | | | |

Referees: Νάστος - Τσιμπούρης



| Each Period | 1st | 2nd | 3rd | 4th |
|--------------|-----|-----|-----|-----|
| ΑΣ Λοκρός | 19 | 19 | 24 | 23 |
| Άρης Νικαίας | 16 | 19 | 13 | 23 |

| End of Period | 1st | 2nd | 3rd | 4th |
|---------------|-----|-----|-----|-----|
| ΑΣ Λοκρός | 19 | 38 | 62 | 85 |
| Άρης Νικαίας | 16 | 35 | 48 | 71 |



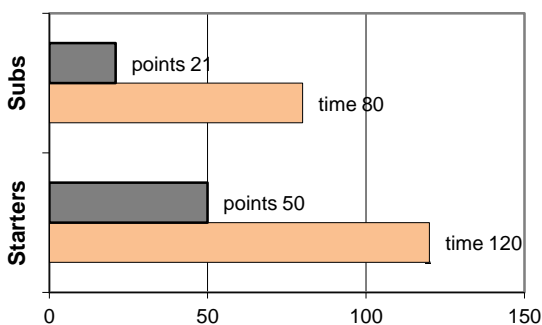
Coach: Π. Ζερβουλάκος

ΓΝΟ ΑΡΗΣ ΝΙΚΑΙΑΣ

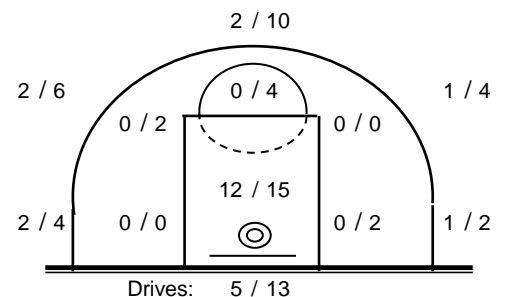
Fast Breaks 1 / 5

| # Player | Time (min) | Points | Ft | 2p | 3p | +/- | Rebs | | As | St | Tu | Bl | Fouls | | Rkg* | |
|-----------------------|------------|------------|-----------|----------------|----------------|---------------|------------|-----------|-----------|-----------|----------|-----------|----------|-----------|-----------|-----------|
| | | | | | | | de | of | | | | | Wo | Co | | |
| 4 Καρυπίδης Αλ. | 0 | 0 | 0 / 0 | 0 / 0 | 0 / 0 | 0 | 0 | 0 | 0 | 0 | 0 | 0 | 0 | 0 | 0 | - |
| 5 Στογιάνοβιτς Μ. | 37 | 23 | 2 / 2 | 3 / 7 | 5 / 12 | -7 | 1 | 0 | 4 | 3 | 2 | 0 | 4 | 0 | 18 | |
| 6 Καννάς Αλ. | 8 | 0 | 0 / 0 | 0 / 1 | 0 / 0 | -5 | 0 | 0 | 0 | 1 | 2 | 0 | 0 | 1 | - | |
| 7 Κοροπούλης Κ. | 31 | 12 | 6 / 6 | 0 / 2 | 2 / 6 | -8 | 3 | 0 | 5 | 0 | 1 | 0 | 4 | 4 | 13 | |
| 8 Θαλασσινός Λ. | 27 | 6 | 2 / 2 | 2 / 7 | 0 / 3 | -24 | 6 | 0 | 0 | 1 | 2 | 0 | 3 | 1 | 3 | |
| 9 Κωνσταντίνου Κ.-Στ. | 21 | 4 | 0 / 0 | 2 / 3 | 0 / 0 | 3 | 0 | 0 | 1 | 0 | 0 | 0 | 0 | 2 | 4 | |
| 10 Γαλίτης Μ. | 16 | 5 | 2 / 4 | 0 / 0 | 1 / 2 | -11 | 5 | 3 | 0 | 0 | 1 | 0 | 2 | 2 | 9 | |
| 11 Κόλλιας Σ. | 35 | 21 | 1 / 3 | 10 / 14 | 0 / 0 | -8 | 5 | 7 | 2 | 2 | 1 | 1 | 4 | 3 | 31 | |
| 12 Καπετάνιος Β. | 13 | 0 | 0 / 2 | 0 / 2 | 0 / 0 | -10 | 0 | 2 | 1 | 1 | 3 | 0 | 2 | 2 | - | |
| 13 Δρίβας Δ. | 11 | 0 | 0 / 0 | 0 / 0 | 0 / 3 | 0 | 0 | 0 | 1 | 1 | 1 | 0 | 0 | 2 | - | |
| 14 Χατζόγλου Π. | 0 | 0 | 0 / 0 | 0 / 0 | 0 / 0 | 0 | 0 | 0 | 0 | 0 | 0 | 0 | 0 | 0 | - | |
| 15 Βλάμης Αν.-Εμ. | 1 | 0 | 0 / 0 | 0 / 0 | 0 / 0 | 0 | 0 | 0 | 0 | 0 | 1 | 0 | 0 | 0 | - | |
| Team | | | | | | | 1 | 0 | | | 2 | 0 | 1 | | | |
| 1st quarter | | 16 | 2 / 4 | 4 / 10 | 2 / 6 | | 9 | 4 | 4 | 2 | 5 | 0 | 4 | 2 | 18 | |
| 2nd quarter | | 19 | 3 / 4 | 8 / 12 | 0 / 6 | | 5 | 4 | 3 | 4 | 3 | 0 | 4 | 6 | 21 | |
| 3rd quarter | | 13 | 4 / 5 | 3 / 9 | 1 / 3 | | 4 | 0 | 3 | 1 | 4 | 0 | 6 | 5 | 8 | |
| 4th quarter | | 23 | 4 / 6 | 2 / 5 | 5 / 11 | | 3 | 4 | 4 | 2 | 4 | 1 | 5 | 5 | 22 | |
| Final Stats | | 200 | 71 | 13 / 19 | 17 / 36 | 8 / 26 | -70 | 21 | 12 | 14 | 9 | 16 | 1 | 19 | 18 | 69 |
| | | | 68% | 47% | 31% | | | 33 | | | | | | | | |

Starters- Subs ratio



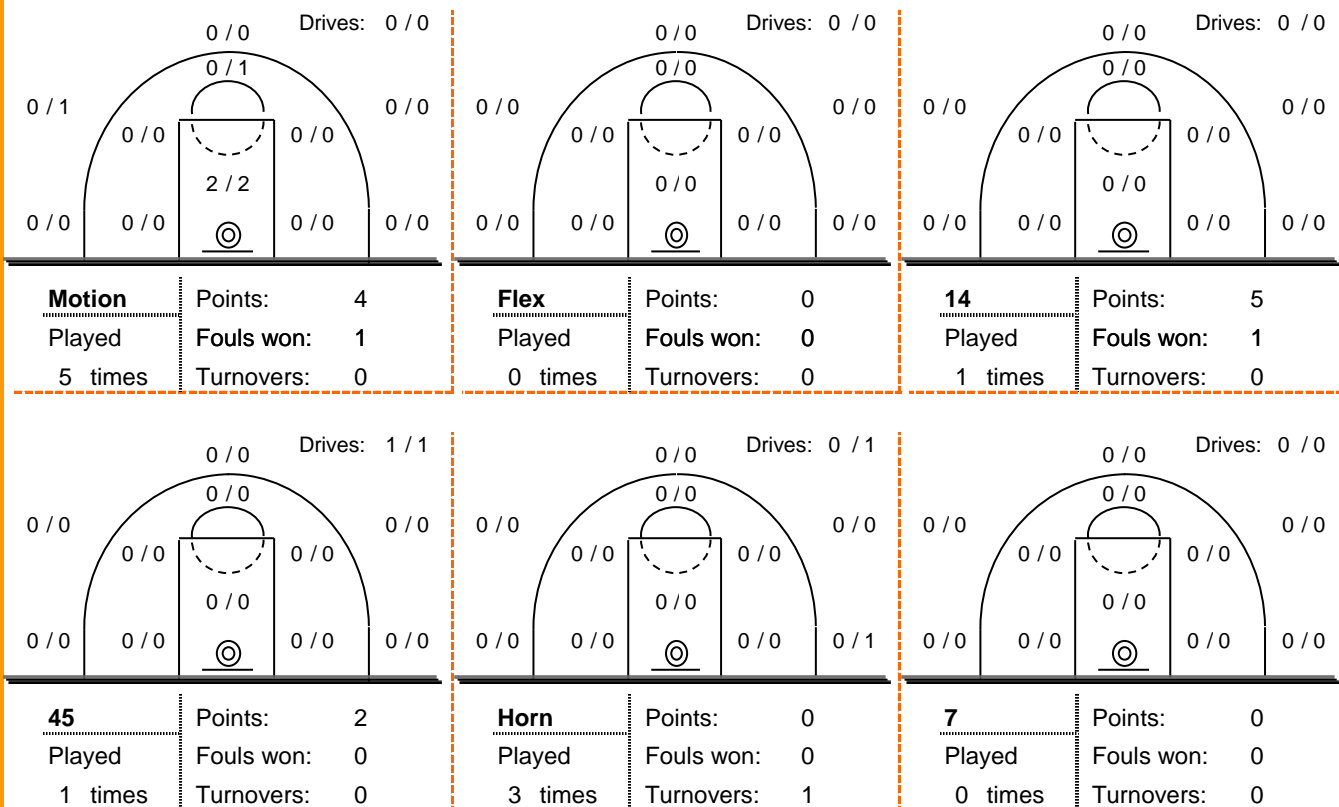
Shot Chart



*Ranking= Pts+Rebs+As+St+B-Mished Shots-Tu (Time Played>7min.)

Offense Analysis

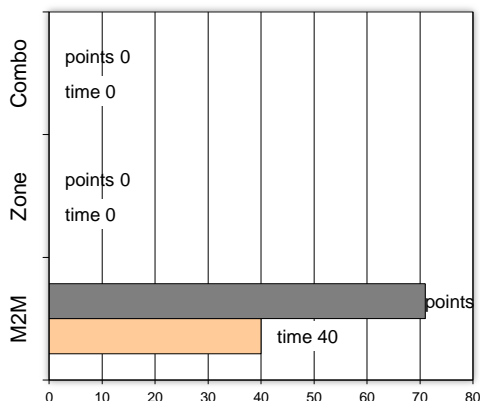
Play performance:



Against Defense Types:

Turnovers:

Fast breaks:



Έγιναν 16 λάθη
0 ήταν χρονικές υπερβάσεις,
0 ήταν παραβάσεις γραμμών,
15 ήταν λάθη κατοχής και
1 ήταν βήματα ή μεταφορά.

Επετεύχθησαν 1 αιφνιδιασμοί
1 ήταν πρωτεύοντες
0 ήταν δευτερεύοντες
0 προήλθαν από λάθος
του αντιπάλου

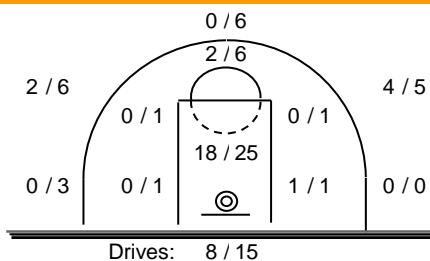
Πραγματοποιήθηκαν συνολικά 87 επιθέσεις, με απόδοση 0.82 έναντι 90 επιθέσεων των αντιπάλων.

Defense Analysis

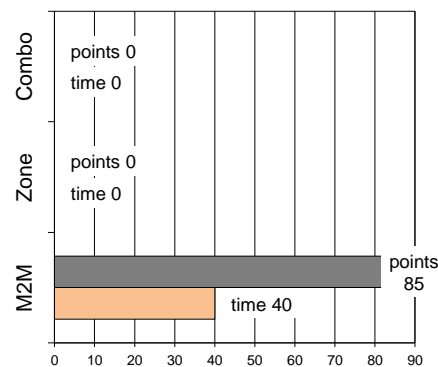
ΑΣ Λοκρός

| | |
|-------------------|-------|
| 4 Διαμάντης Σπ. | 8 -2 |
| 5 Ρούζιος Π. | 7 -1 |
| 6 Μπολμάτης Μ. | 5 -1 |
| 7 Μπουλατζάς Ηρ. | 4 |
| 8 Νικολάου Μ. | 0 |
| 9 Παναγιωτίδης Χ. | 7 -1 |
| 10 Κανακάρης Χ. | 0 |
| 11 Σάκοτα Π. | 26 |
| 12 Μάτος Αν. | 25 -1 |
| 13 Μάτος Αγ. | 0 |
| 17 Ρετινιάς Δ. | 3 |
| 15 Θεοδώρου Ι. | 0 |

Opponent's shot chart

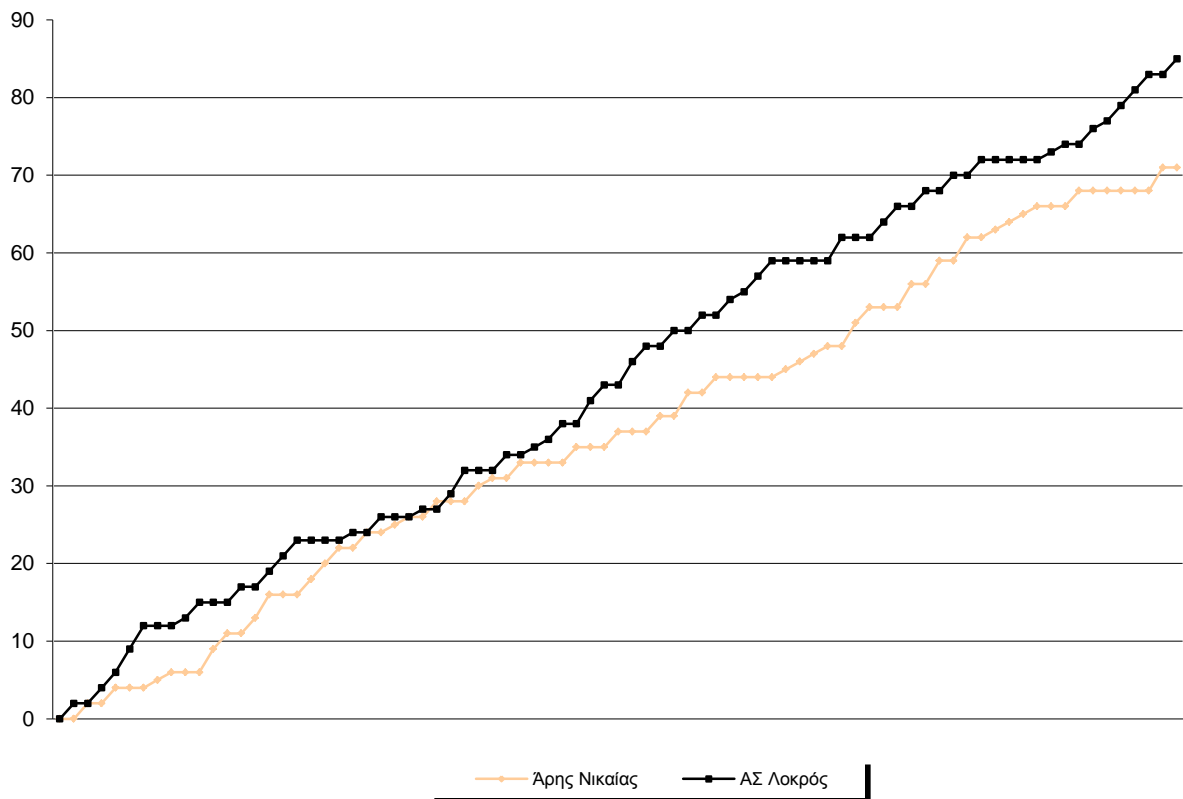


Defense Types Performance

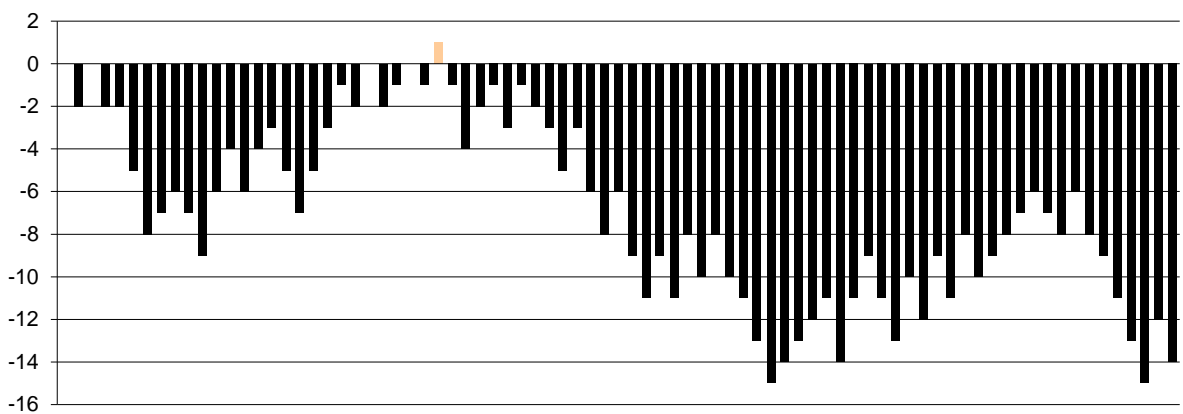


Graphic Stats

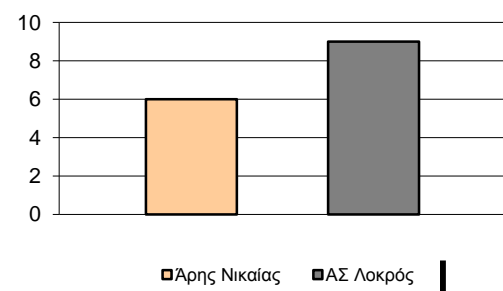
Score Evolution



Score Difference



Largest Scoring Run



Notes